

**ARKANSAS
RIVER BASIN
WATER FORUM**



**ARKANSAS RIVER BASIN WATER FORUM
IN COLLABORATION WITH
PUBLIC EDUCATION PARTICIPATION & OUTREACH
WORKGROUP**

*Has Come together to
Promote
Education to Action*



BRIEF HISTORY



- The Forum was established to pull together diverse Water Interest and engage in open dialogue focusing in the Arkansas River Basin
 - Through this dialogue we seek to create a greater understanding of Colorado Water law, uses and conservation
 - In 1995 the first Water Forum was held in Pueblo CO

Since then the Forum has been held every year alternating between the upper and lower basin

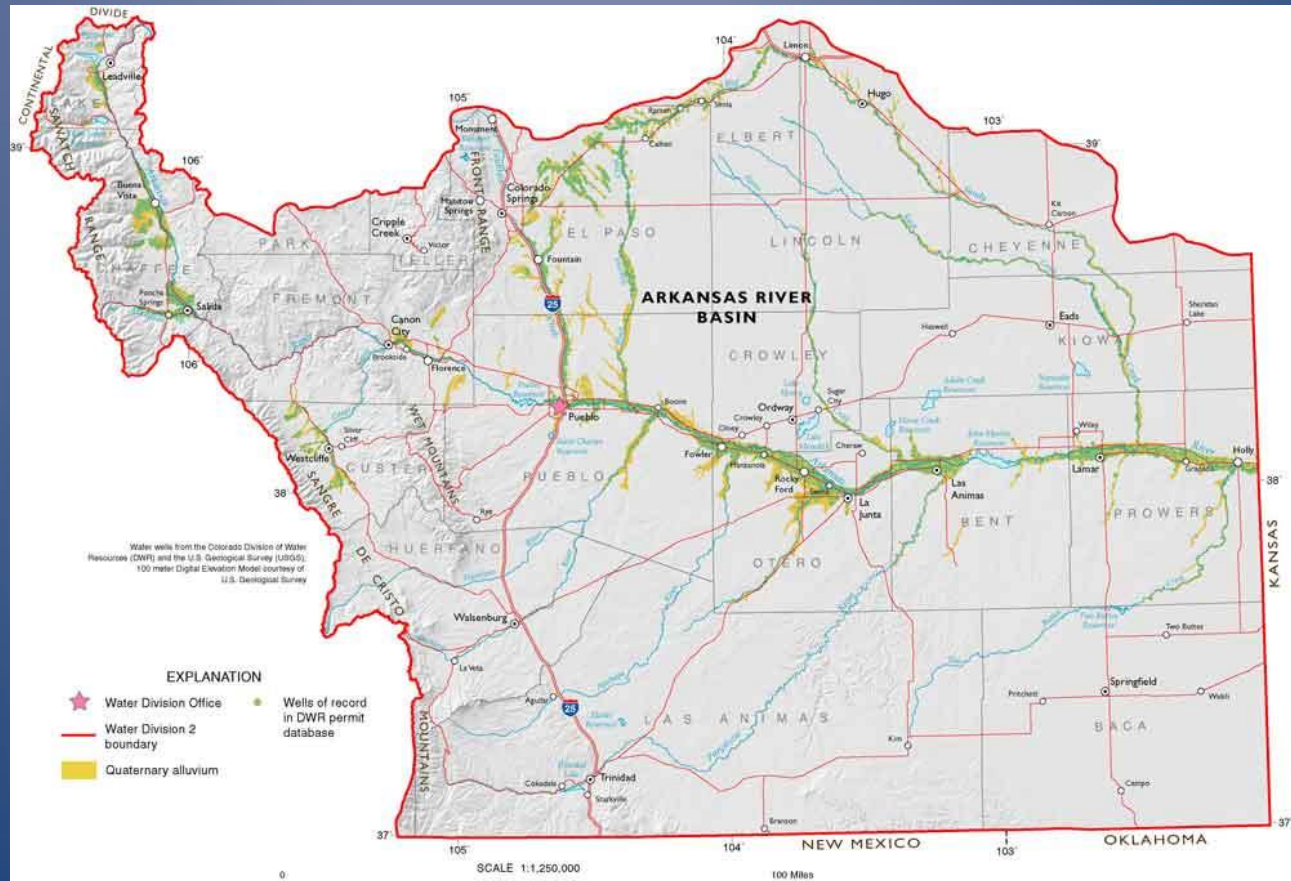
In 2014 we became 501c3 non-profit to expand opportunities in education and relevant water issues

- That same year we aligned with Arkansas Basin Roundtable as a conduit for educating the public on the Colorado Water Plan

In 2015 we joined with Public Education Participation Outreach (PEPO) workgroup to further extend learning opportunities with Colorado water

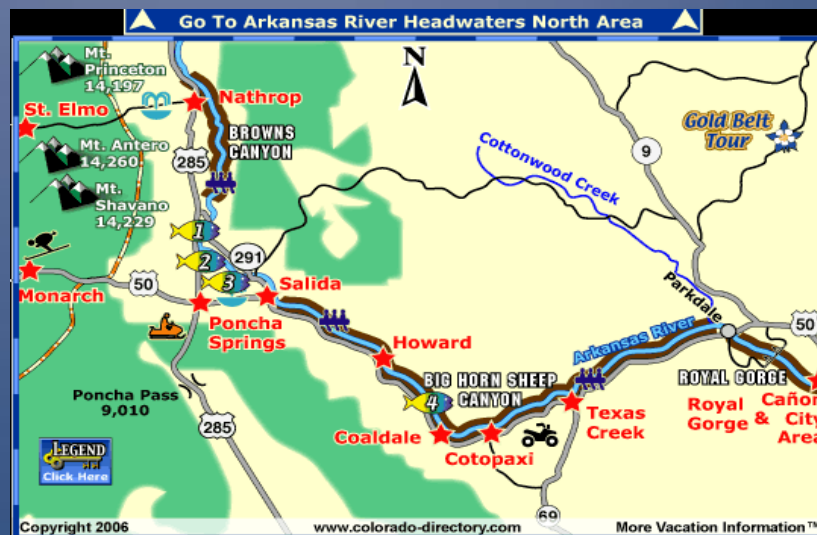
DEMOGRAPHICS

- Arkansas Basin is 1 of 8 river basins in Colorado + Denver
- Incorporates 19 Counties
- 33,155 sq. miles
- Population in 2014 = 1,040,358
- Population density range from 0.8 people per sq. mi. to 293 per sq. mi. depending on county



ISSUES

- Flood control procedures in the upper basin may detrimentally affect downstream lower priority users who depend on surges in streamflow
- Cutting M&I flows may affect recreation
- Cutting Agricultural may affect wildlife and recreation



EVENTS THEME



- Each year we try and create a theme for our Forum which represents the focus of that year's program and the location in which it is held
- Our theme for the 2016 Forum is the "Color of Water"
 - What does this mean?
 - It's a program to ensure full access to all the activities associated with the needs of the river users
 - A Voluntary Flow Management Program (VFMP) managed by;
 - Arkansas Headwaters Recreation Area (AHRA)
 - Bureau of Reclamation
 - Southeastern Colorado Conservancy District
 - Pueblo Board of Water Works
 - The Colors Represent the different flows as part of the 10,000 acre feet managed throughout the season to ensure
 - Rafting
 - Fishing
 - Kayaking
 - Boating

**PLANNED
2016
PROJECTS**

- *DINNER BY INVITATION*
- *PBS DOCUMENTARY*
- *NEWS MEDIA ARTICLES*
- *WATER FESTIVALS*
- *PUBLIC LIBRARY ACTIVITY BOOKS*
- *EDUCATION TO ACTION PROGRAM*



DINNER BY INVITATION PROGRAM

- *Target Audience*
 - *Government, municipality and elected Basin stakeholders*
 - *Goal: 100 attendees*
- *Content:*
 - *Water law and challenges across the state and focus on hot topics within the surrounding area.*
 - *Draw upon Basin professionals who represent different areas of expertise.*

**PBS
DOCUMENTARY**

- *Support Documentary Film on the Arkansas River*
 - *The content of this film will include the economic value of the River and the recreational, municipal and agricultural needs it serves.*
 - *The film will air on Rocky Mountain PBS.*

NEWS MEDIA SCHEDULE

- *Publish 12-24 Newspaper Articles Across the Basin*
 - *Goal is to connect with every newspaper across the Basin*
 - *Articles will be around various water topics written by professionals and catered to a general audience*
 - *Articles also may be featured letters from high school students about the State Water Plan (received by CWCB).*

ARKANSAS BASIN WATER FESTIVALS

- *4-H and Mini Festivals in small communities*
 - *Connect to 100 – 250 family members in mini festivals*
- *New Festivals in Salida & Colorado Springs*
 - *Connect to 500 – 1,000 family members for new festivals in Salida & Colorado Springs*

PUBLIC LIBRARIES & EDUCATION TO ACTION

- *Collaborate with libraries to distribute summer reading programs*
- *Promote Arkansas Basin Implementation Planned projects*
- *Promote collaborative watershed management programs*
- *Promote conservation & engineering projects*



QUESTIONS?



ESTABLISHED 1995